
LABWORKS PROCESS SCHEDULER Department

**Adding default department to samples using
LABWORKS Sample Login**

REVISION HISTORY

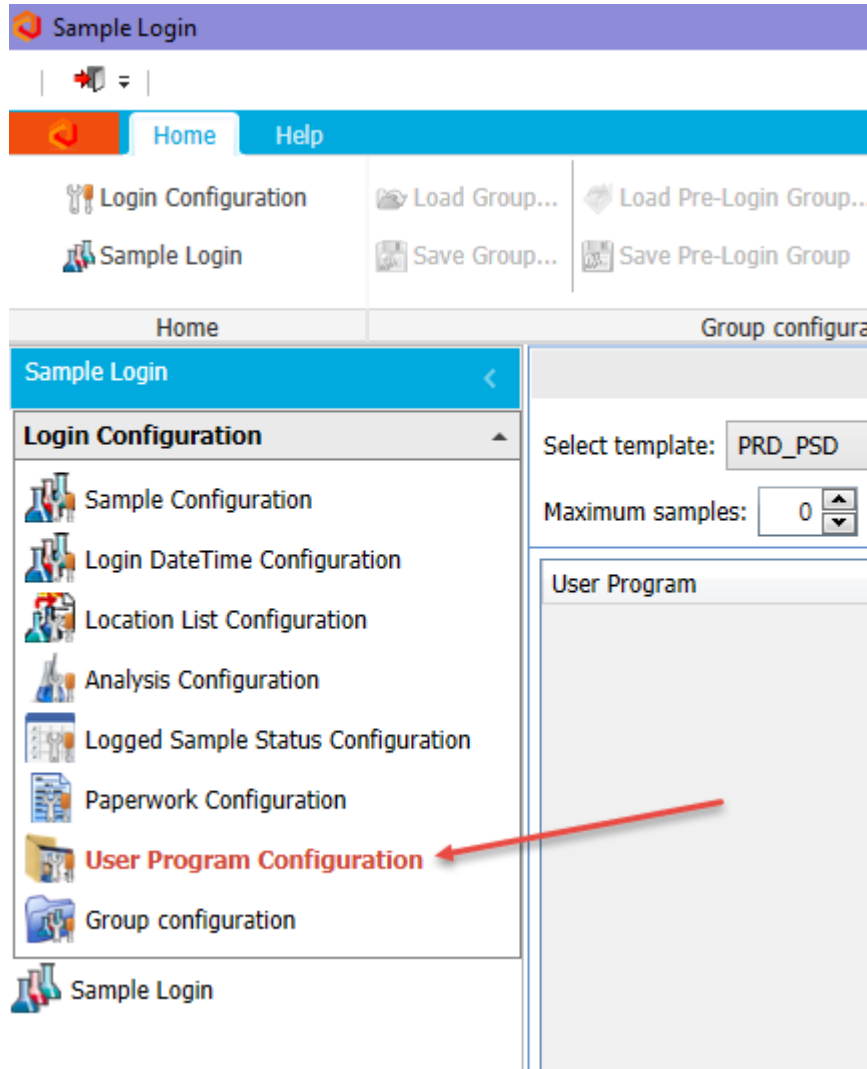
DATE	REVISION #	COMMENTS
11/08/2022	1.0	Initial revision

CONTENTS

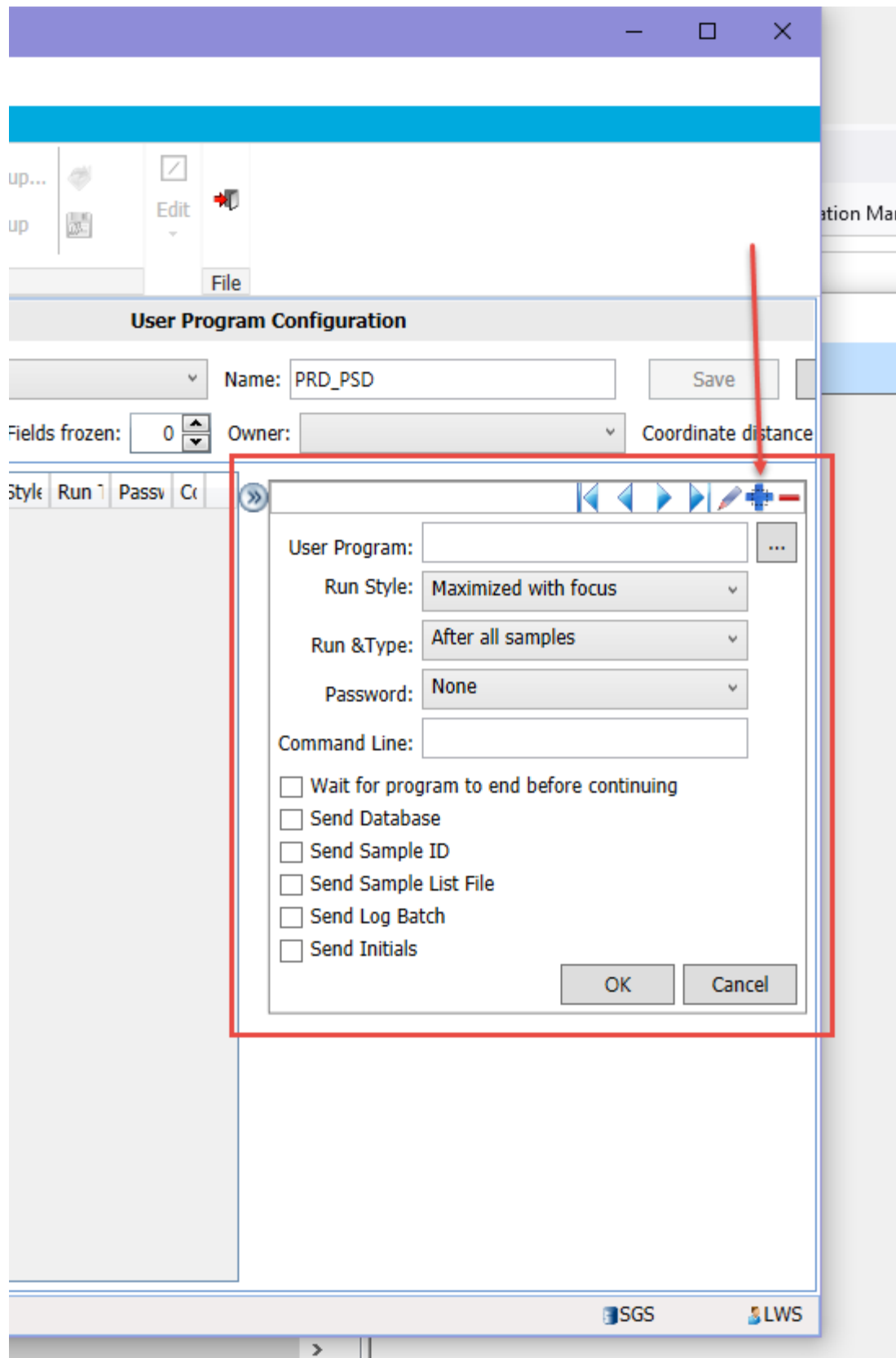
REVISION HISTORY	2
CONTENTS.....	3
ADDING PSDEPT FROM LWSAMPLE GIN.....	4

Adding Samples to Process Scheduler from LWSAMPLELOGIN

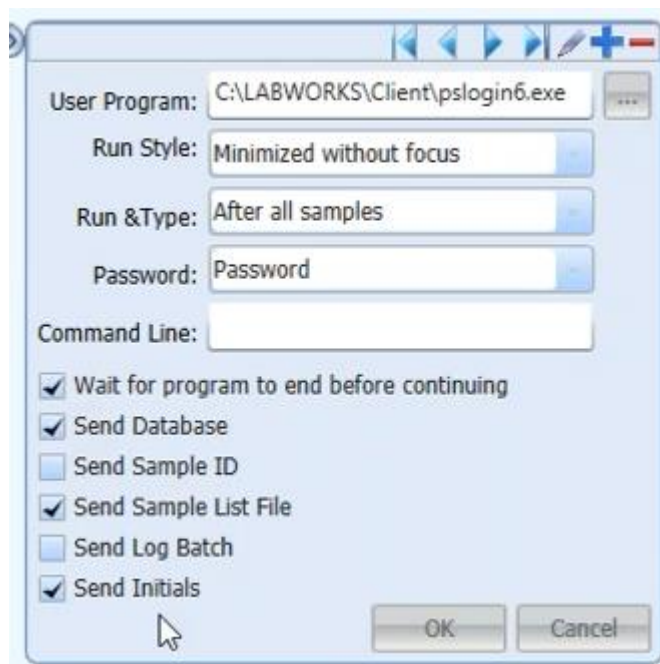
In Sample Login, in order to set the Process Scheduler department value without being prompted you need to run a program called PSLOGIN6.EXE as a post-login program. To do that, you edit the template in the sample login program and in the edit screen, click the option for User Program Configuration:



A setup form will appear to the far right:



Click the “plus” icon to add a new post login program and make sure it matches the screen shot below exactly – with the exception of the path to the PSLOGIN6.EXE program (your LABWORKS client path may vary):



Save your login template and then the sample login program will assign the Process Scheduler department you’ve specified in LABWORKS.INI.

1 ADDITIONAL PROCEDURES – SERVER CHANGE

1. Duplicate LWDATA and rename it to “LWDATA_DEV” in order to isolate development from the production system.

2. eWorksheets path will need to be updated by running the following script with the new and old path:

```
UPDATE DATASTORE SET DATA = REPLACE( CAST( DATA as varchar(max) ),  
'ExcelFilePath=c:\labworks\lwddata', 'ExcelFilePath=“\\labworksappdev\LWDATA') where key1 =  
'EWORKSHEETTEMPLATE';
```

3. Reconfigure all ApplicationSpec.XML and ClientApp.config files with the new PLATFORM_SERVER_PATH.

4. If Scandaemon and Process Scheduler are running as a service, reconfigure LWServiceConfig.xml file in C:\Program Files (x86)\LABWORKS\LWDataServices folder, with the new PLATFORM_SERVER_PATH.

5. If using