
LABWORKS LIMS v6.8

Firewall configuration and Testing Windows Server 2012

LABWORKS Firewall Configuration and Testing Windows Server 2012

Applicationspec.xml configures the destination server for Authentication and other services.

Set the PLATFORM_SERVER_PATH as the host id of the server where LWLicenseService/LWDataServices are installed.



```
ApplicationSpec.xml - Notepad
File Edit Format View Help
<APPSETTINGS>
  <LICENSE_SERVER LICENSE_FILE_PATH="C:\LABWORKS\LWEXE67\"/>
  <APPCONFIG REFRESH="TRUE"/>
  <LSESSION6 LAUNCH_DELAYTIME="40"/>
  <PLATFORM_SERVER_PATH PATH="PAF-DEV02"/>
  <Login_Page Flavor="Process"/>
</APPSETTINGS>
```

On the server make sure the ports for Labworks services are open.

Authentication, 10001, 10003, 10005


Other services, 9003, 8081, 8083, 9005, 9007

Labworks Properties

General Programs and Services Remote Computers

Protocols and Ports Scope Advanced Local Principals Remote Users

Protocols and ports

 Protocol type: TCP

Protocol number: 6

Local port: Specific Ports

10005, 10001, 10003

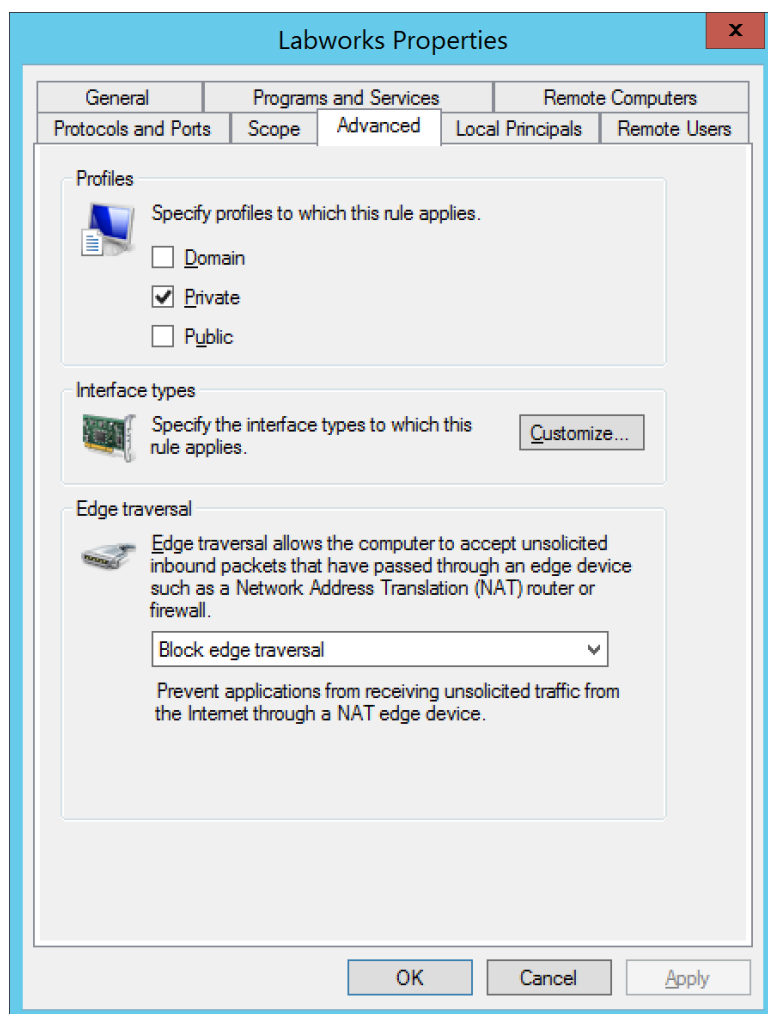
Example: 80, 443, 5000-5010

Remote port: All Ports

Example: 80, 443, 5000-5010

Internet Control Message Protocol (ICMP) settings: Customize...

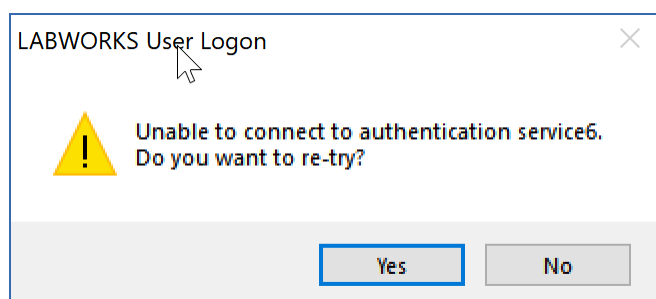
OK Cancel Apply



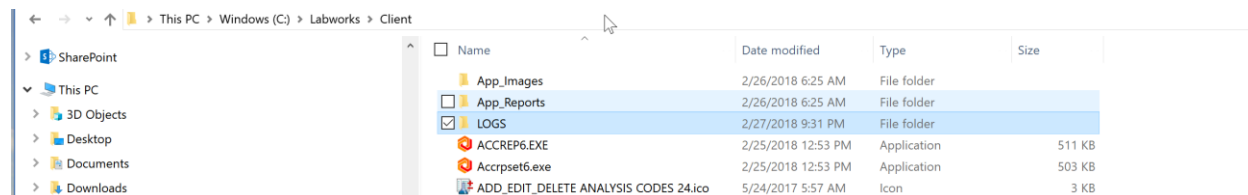
Testing the connection.

Run the program LWDesktop_Dotnet.exe

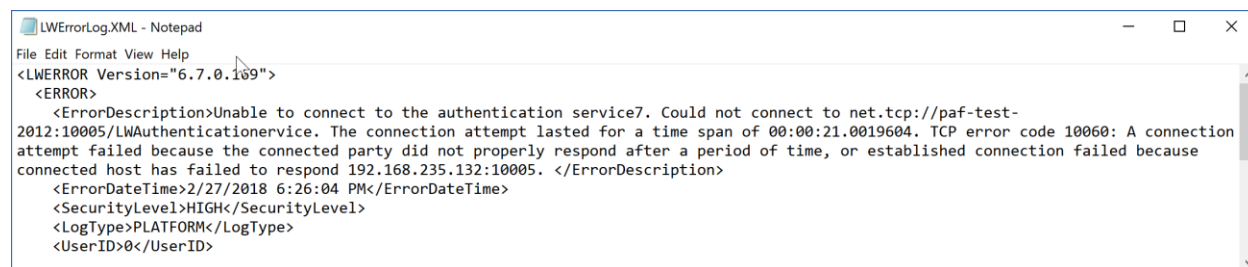
If the login prompt doesn't display, then wait 60 seconds for the application to time out and prompt to re-connect.



The c:\labworks\client\logs folder will contain the error message.



Example Error message



This example error message was created by locking down the port on the firewall. The same message is generated when the services aren't running.

When configuration and firewall is correct, valid connections are as follows

Showing Connections.

NetStat -a -b

```

TCP 192.168.235.132:10001 PAF-DEV03:59030 ESTABLISHED
[LWLicenseServices64.exe]
TCP 192.168.235.132:10003 PAF-DEV03:59031 ESTABLISHED
[LWLicenseServices64.exe]
TCP 192.168.235.132:10005 PAF-DEV03:59029 ESTABLISHED
[LWLicenseServices64.exe]

```